

# PRODUCT FACTS

Title: ROPLEX  
Bulletin No.: 0024  
Issue Date: N/A

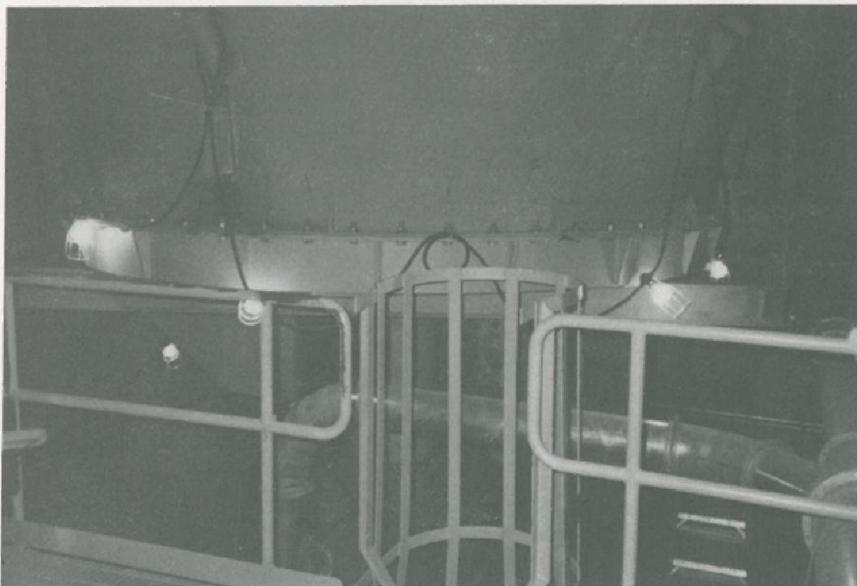
2055 Bee's Ferry Road ♦ Charleston, SC 29414 ♦ (803) 763-6616 ♦ FAX: (803) 763-2338 ♦ TELEX: 882894

## ROPLEX DISCHARGER AT SCRUBGRASS COGENERATION

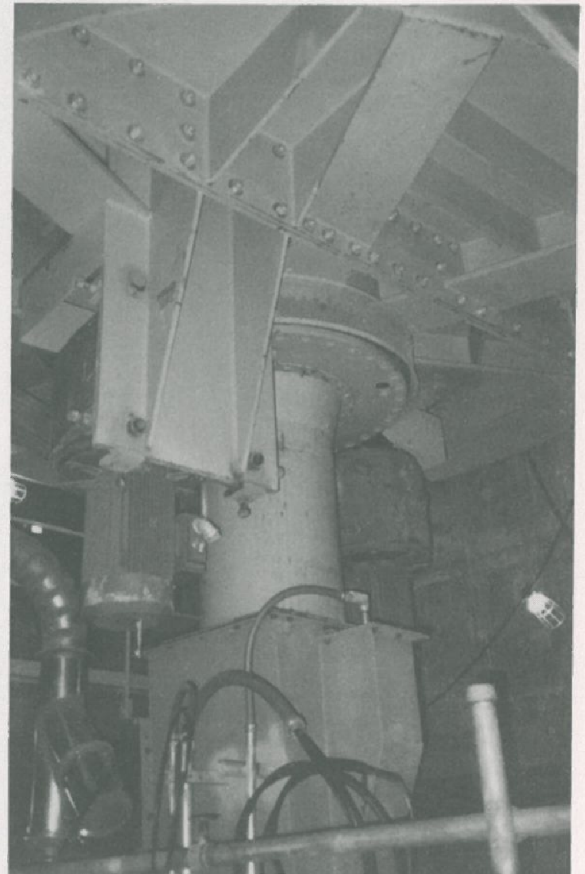
One *ROPLEX* rotary plow discharger is feeding coal gob to a coal mixing operation at Scrubgrass Cogeneration Project in Kennerdell, Pennsylvania. This 13 ft. diameter unit delivers from 25-200 tons per hour of coal gob depending on plant demand.

Gob is a difficult product consisting of coal waste left behind after traditional coal mining. It is high in moisture, fines, and impurities. This product is now being reclaimed to power fluid bed combustors all over the Eastern U.S.

The project was handled by Roberts & Schaefer Co. in accordance to specifications written by Bechtel Corp. The *ROPLEX* discharger was designed and manufactured by Hindon Corporation.



View showing flange connection of ROPLEX to bottom of silo.



View from below ROPLEX showing dual drives and slewing bearing - all external to material handling system.

